

# MiniNeo S300

www.mininggeek.com support@mininggeek.com



## Packing list



S300 \* 1



User manual \* 1



3.5" hard drive / power stand screw \* 4



Power/side board screw \* 6



Motherboard/graphics card extension cable screw \* 10



2.5" hard drive screw \* 4

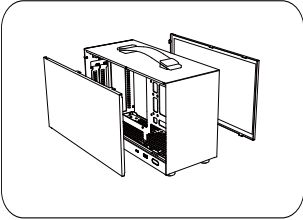
## Specification

Model	S300CB(Black)/S300CW(White)
Product size	312x135x193mm(LxWxH)
Supported motherboard	ITX (170x170mm)
Supported hard disk	2.5SSDx1,3.5HDDx1 (Graphics card length less than180mm)
Graphics card length	≤ 305mm
CPU cooler height	≤ 60mm
Fans	8010x1 (Bottom plate), 12015x1
Interface	POWER,USB 3.0x1,TYPE-C
Power supply	SFX/SFX-L

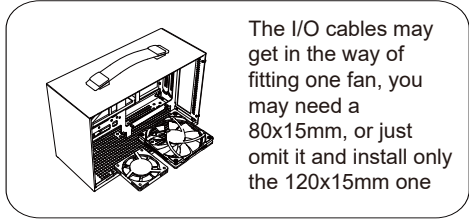
# Installation Steps

**Note:** To use a PCIe 3.0 riser cable and if your motherboard and graphics card are of Gen 4, then connect your graphics card directly to the motherboard so that you can set BIOS to switch the PCIe port to accepting Gen 3 speed. Otherwise a PCIe 4.0 riser cable is needed.

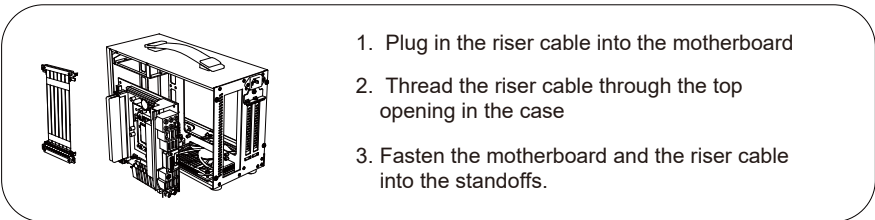
## Step 1: Remove side plates



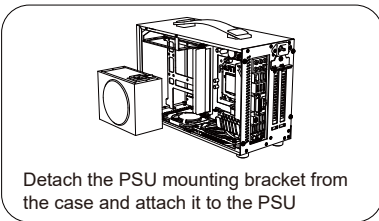
## Step 2: Install the fan(s)



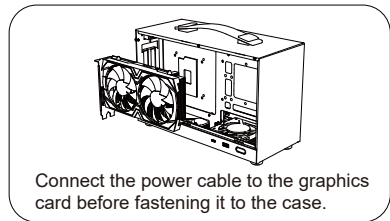
## Step 3: Install the graphics card riser cable and the motherboard



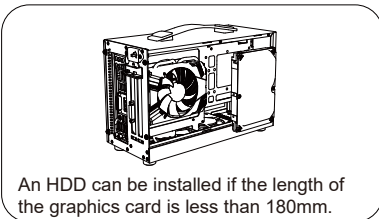
## Step 4: Install the power supply



## Step 5: Install the graphics card



## Step 6: Install the hard drive



## Note: Power cable connection

